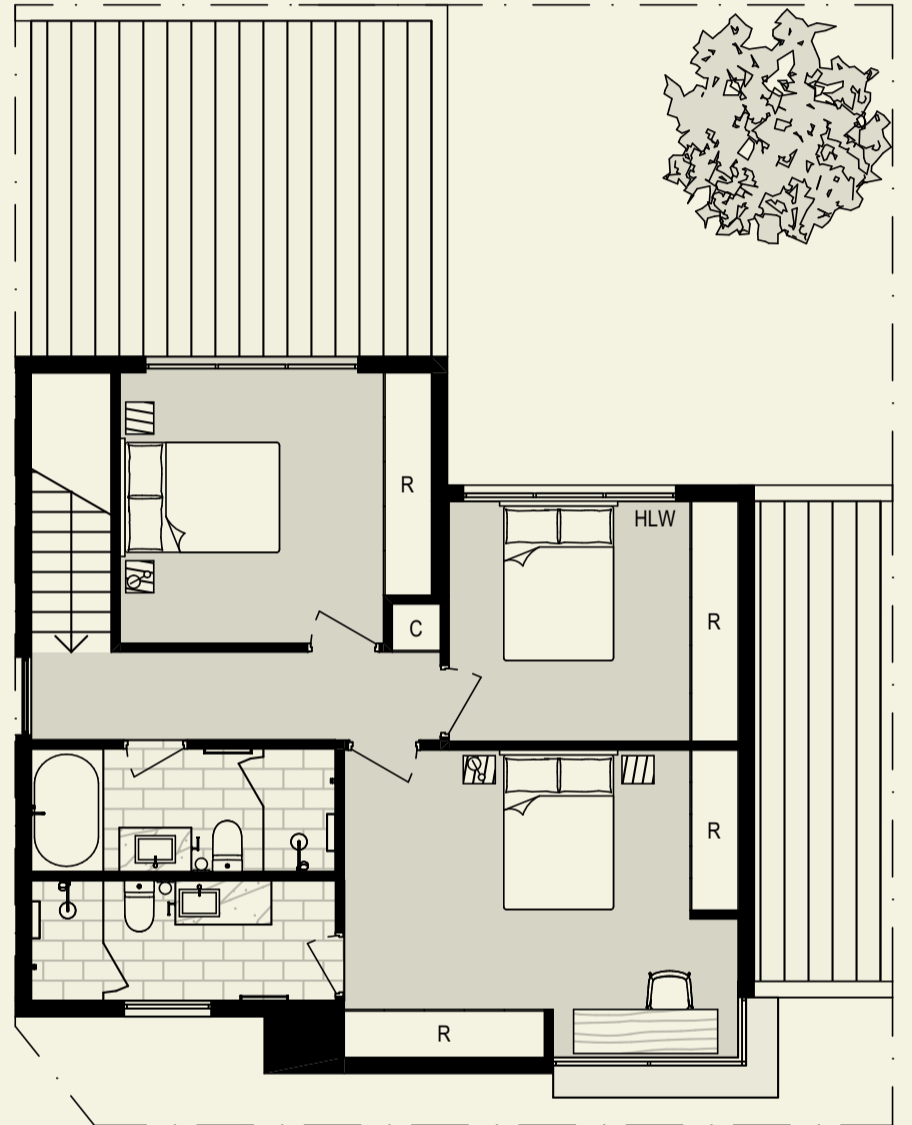


Townhome Type B

3 bedrooms & 2 bathrooms



Ground floor



First floor

Bedroom	3	Ground floor	64.5m ²
Bathroom	2	First floor	70.8m ²
Powder room	1	Garage	36.4m ²
Living	1	Driveway	9.4m ²
Garage car space	2	Front yard	9.2m ²
		Rear yard	33.4m ²
		Total	223.7m ²



Contact

thebottleworksgelong.com.au